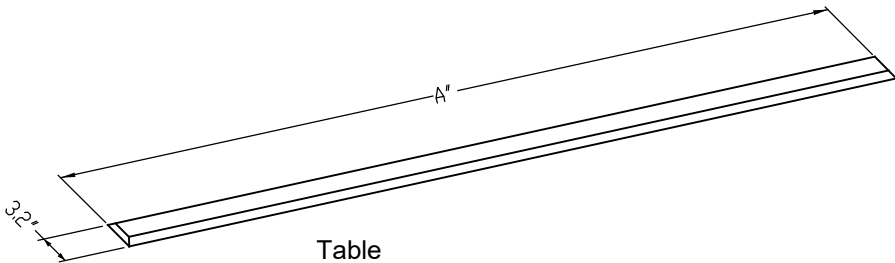


- 1: These instructions may not cover all details or variations. For additional information contact Beta-calco.
- 2: Luminaires must be installed in accordance with national electrical code and local regulation.
- 3: Disconnect the power before installing the fixture or servicing.
- 4: Min 90°C supply conductors.

INSTALLATION STEPS:

- 1. Using Table for reference, cut the opening in the ceiling material.

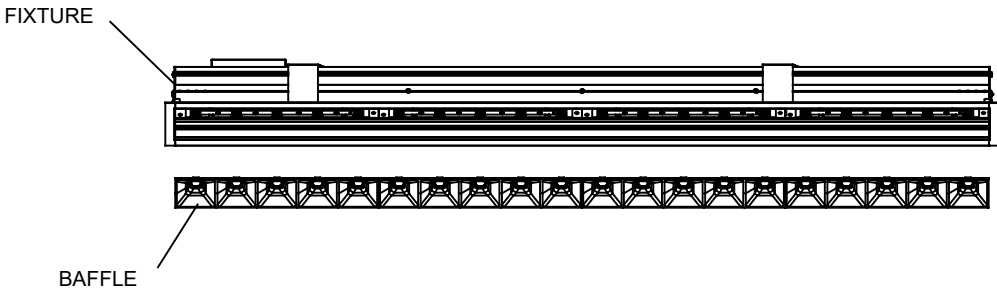


Table

Fixture length	4ft	6ft	8ft	10ft	12ft	continuous
A (in)	48.8	72.8	96.8	120.8	144.8	∅AL+0.8"

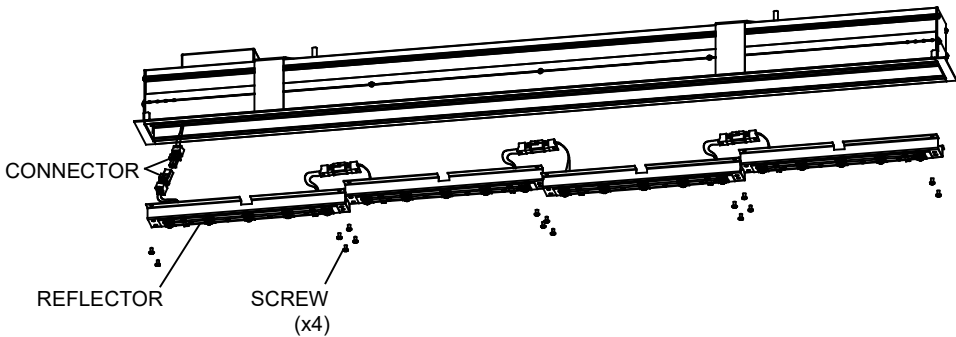
SINGLE FIXTURE INSTALLATION:

- 2. Temporarily remove baffles.

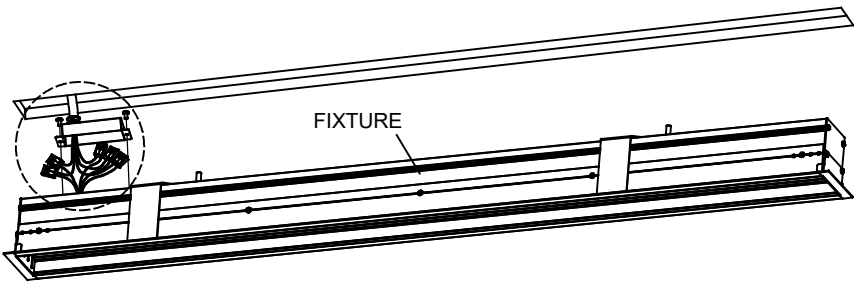


- 3. **WARNING:** Never touch the yellow portion of the LED chip or damage may occur.

Temporary remove reflector with LED boards by untighten 4 screws on each reflector. Disconnect connectors between reflector and fixture.

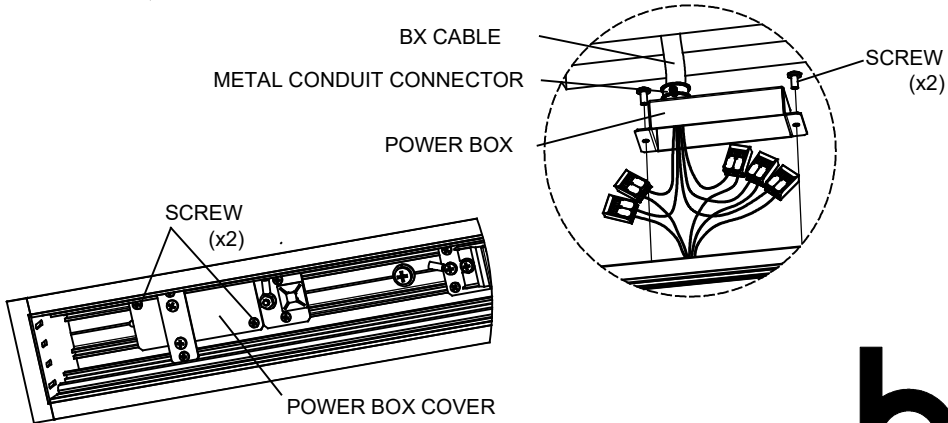


- 4. **WARNING:** Electrical shock hazard. Ensure the mains voltage supply is turned OFF before making any connections to the fixture. Do not turn the mains power supply back on untill all necessary electrical connections are made and fixture is closed. Make all necessary electrical connections according to all relevant electrical codes.



Remove the power box from the top of the fixture. Install BX cable (by others) through the metal conduit connector (by others) and install onto the power box. Make electrical connections between wires of BX cable and fixture wires according to the wires labeling. Place connected wires inside the power box. Reinstall the power box to the fixture.

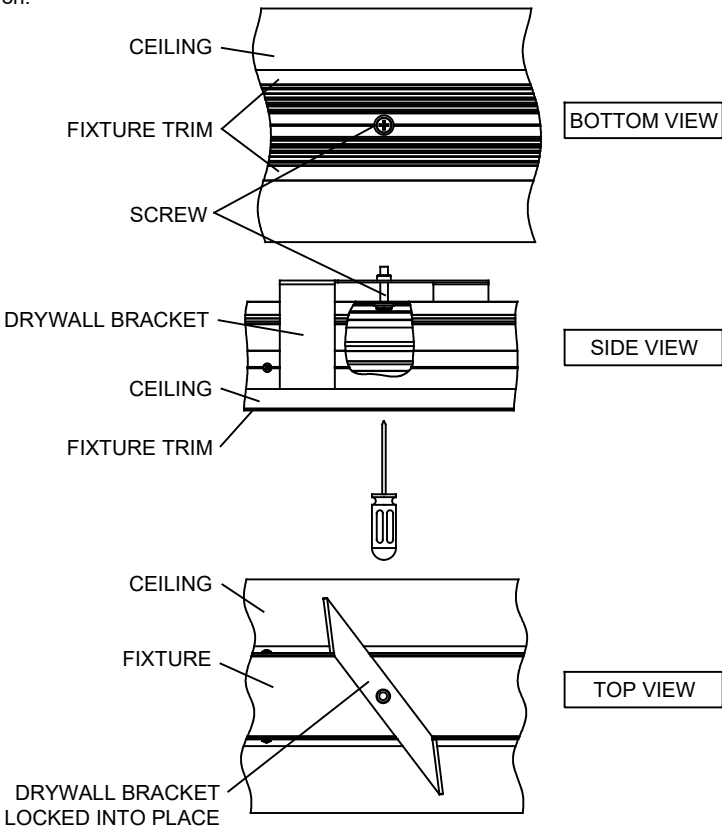
To have access inside the power box when fixture installed to the ceiling, remove power box cover inside of the fixture by untighten two screws.



FIXTURE DESCRIPTION: BGGR1R

- 1: These instructions may not cover all details or variations. For additional information contact Beta-calco.
- 2: Luminaires must be installed in accordance with national electrical code and local regulation.
- 3: Disconnect the power before installing the fixture or servicing.
- 4: Min 90°C supply conductors.

- 5. Insert fixture into the ceiling cutout. Turn the drywall bracket screws to rotate the drywall brackets in place. Tighten the drywall bracket screws to lock into place and secure fixture to the ceiling.

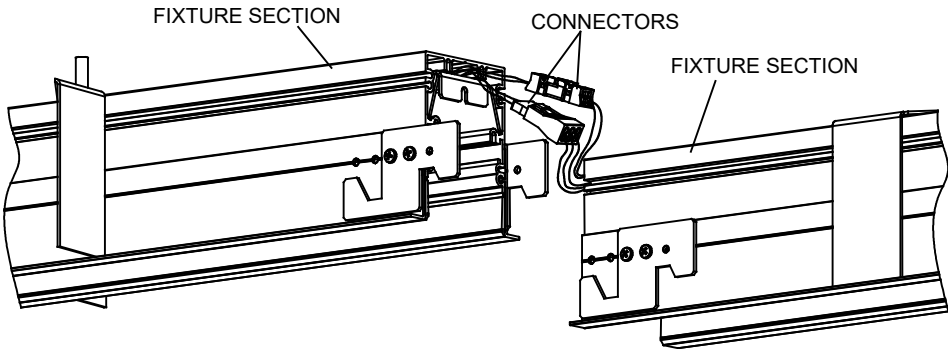


- 6. Reinstall reflectors with LED boards (see step 3).
- 7. Reinstall baffle (see step 2).  
Now the power can safely be turned on.

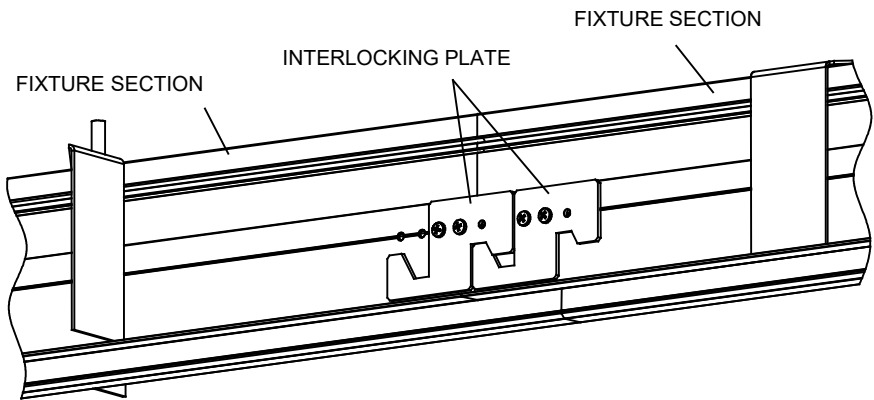
CONTINUOUS FIXTURE INSTALLATION:

- 8. Start from the first section with the power box and repeat steps 2, 3, 4 and 5.
- 9. For the second section repeat steps 2 and 3.

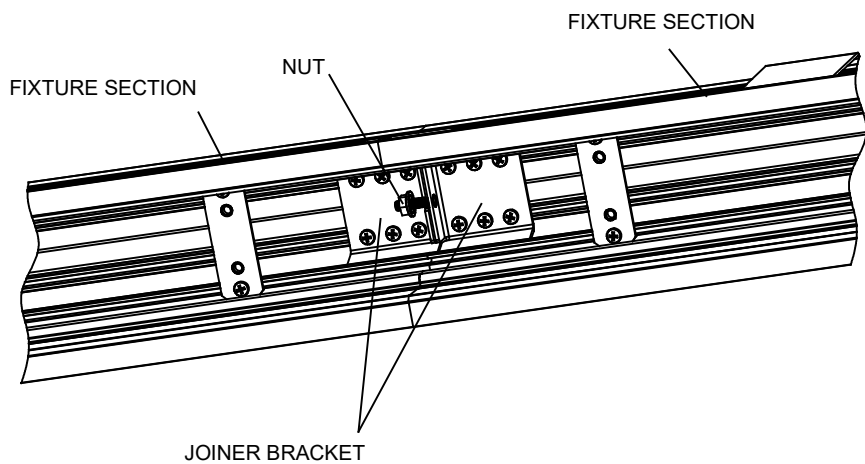
- 10. Lift this second section in the ceiling cutout and make the wiring connection between both sections using connectors.



- 1: These instructions may not cover all details or variations. For additional information contact Beta-calco.
- 2: Luminaires must be installed in accordance with national electrical code and local regulation.
- 3: Disconnect the power before installing the fixture or servicing.
- 4: Min 90°C supply conductors.



- 11. Join both sections together using interlocking plates on both sides of each section and fastening the nut on the joiner bracket.



- 12. Repeat step 5 for the second section.
- 13. Reinstall reflectors with LED boards (see step 3).
- 14. Reinstall baffle (see step 2).
- 15. When all sections of the fixture secure to the ceiling, the power can safely be turned on.